

# Twickenham & Richmond **TRIBUNE**

## Contents

- TwickerTape
- TwickerSeal
- History Through Postcards
- Arts and Entertainment
- River Crane Sanctuary
- Twickers Foodie
- Traveller's Tales
- Football Focus
- Rugby updates
- Brexit: UK Borders

## Contributors

- TwickerSeal
- Alan Winter
- Emma Grey
- Sammi Macqueen
- Alison Jee
- Mark Aspen
- Doug Goodman
- RFU
- LBRuT
- National Audit Office

## Editors

- Berkley Driscoll
- Teresa Read



# TickerTape - News in Brief

## Art, music and creative activities this Halloween at Orleans House Gallery

Release Date: 17 October 2019

Come along to Orleans House Gallery this Halloween for an evening of free entertainment, as part of its after hours events programme.

Doors will open from 6 to 10pm on Thursday 31 October for visitors to enjoy live music by The Askew Sisters, a pop-up bar and a silent disco in the vaults of the 18th century wine cellar!

## School children become local politicians for the day!

Year 6 children from around the Borough gathered at York House Council Chamber for this year's Pupil Parliament.

The event saw two pupils from each school debate and give speeches on important issues. This year's debate was 'Should 16-year-olds be allowed to vote in elections?'

Students gave passionate one-minute speeches on the topic, questioned speakers and voted for a Mayor and Deputy Mayor from ten finalists. The young politicians voted Leahara from Hampton Hill Juniors as their Mayor and Max from St Mary's C of E as their Deputy Mayor.

## Children to experience the power of creativity at this year's Richmond Literature Festival

Interested in a fun and inspiring family day out this November? Grab tickets to this year's Richmond Literature Festival.

Some of today's finest literary personalities will lead interactive workshops as part of the Festival's dedicated programme of events for children and families.

Tickets can be booked online, by phone 020 8831 6494, or in person at Orleans House Gallery.

For more information visit [Richmond Literature Festival website](#)



Replacing your halogen recessed lights with LEDs will:

- ✓ SAVE ENERGY
- ✓ SAVE YOU MONEY
- ✓ PROVIDE BETTER LIGHTING

So...

- ✓ CALL US TODAY FOR A FREE HOME ASSESSMENT AND QUOTE

For a timed appointment please call Sky Electrical on 020 8894 1799  
22 Fifth Cross Road, Twickenham, Middlesex, TW2 5LF  
[www.skyelectrical.co.uk](http://www.skyelectrical.co.uk)



**020 8894 1799**  
[info@skyelectrical.co.uk](mailto:info@skyelectrical.co.uk)



Someone once said “*I think that I shall never see a poem lovely as a tree*”. TwickerSeal loves trees and has been particularly pleased to see

that the council has announced a campaign to plant thousands of additional trees over the next five years.

TwickerSeal is an avid reader of the borough’s favourite newspaper (the Twickenham & Richmond Tribune) and had seen its recent promotions for tree planting, particularly the Woodland Trust’s campaigns [Free trees for schools and communities](#) and [Plant a Tree](#)

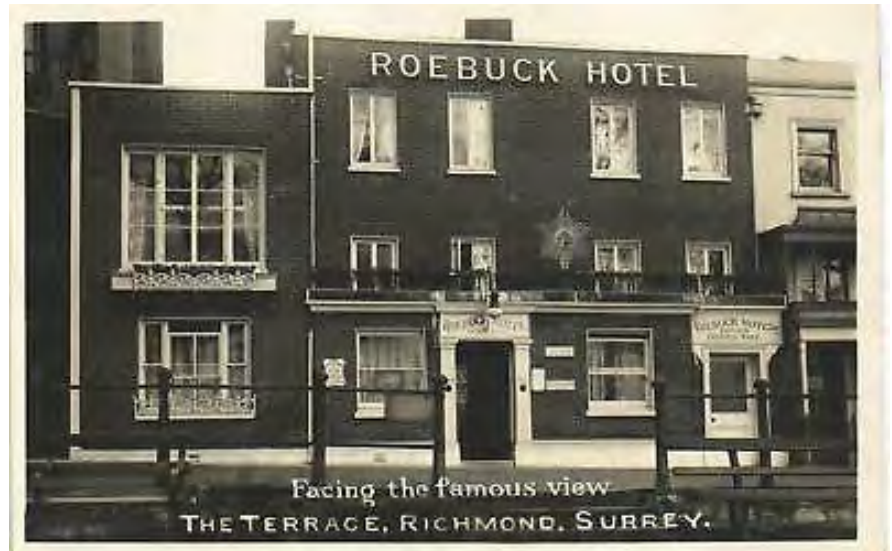
TwickerSeal is pleased that the council has followed the TRT’s lead and hopes its readers will get involved. TwickerSeal’s wonderful chum Cllr John Coombs [Tweeted](#) “*We agreed at Monday’s Environment etc. committee, Richmond Council, to plant many more trees. First an audit of all trees will be done to see where new ones can be planted. Ideas?*” Hopefully readers will engage with and support the council on its new programme.



The dictionary definition tells us that a Roebuck is the name sometimes referring to the male of the animal species known as Roe Deer.

In my time wandering around this borough, I have tripped over two other Roebucks both of which are prime examples of the area's eclectic mixture of public houses.

Our first Roebuck sits proudly near the top of Richmond Hill at number 130 with the terrace and its famous view opposite. It is thought by many to have the best view of any pub in London and who would argue?



Early records date it back to 1822 but it is thought to have been a beer house even earlier. In recent years you may have been joined at the bar by celebrities from the world of rock and cinema as well as radio and TV broadcasting.

These days it is part of the Greene King pub chain but you can't pop in for a pint this weekend because it is currently closed for a refurb and will be opening again next Friday 25th October.

Our second Roebuck is a Victorian street corner pub at 72, Hampton Road, Hampton Hill and is a favourite of mine that I use fairly often. Terry Himpfin and his friendly staff run a traditional local pub with a difference. There are no TV's, games machines or jukeboxes and there is a delightful walled garden at the rear. A pub with little background noise where you can enjoy conversation in comfort. In recent years the Roebuck has picked up many awards from CAMRA and is known as a pub with an excellent offering of beers.

The Roebuck serves lunches on weekdays between 12.00 and 2.00 and also offers bed and breakfast. Its biggest claim to fame is the massive collection of memorabilia that Terry has collected over the years. Almost every inch of the walls and ceilings are covered with antique fishing rods, bus stops and breweriana in the shape of bottles and tins. A full-size Harley Davidson motorcycle made of cane hangs from the ceiling and you can read all about the wars in the 20th century with the newspapers of the day cleverly placed in the table tops. Autographed photos of world champion boxers sit next to news that the Titanic sank yesterday! If you look very closely you may even spot a Brentford

football club flag that I donated a few years back.



There is a photo gallery showing bits of the pub including Linda pulling a pint on its website at [www.roebuck-hamptonhill.co.uk](http://www.roebuck-hamptonhill.co.uk)

While we are at the Hampton end of the Borough you may be interested in a brand new book by local historian John Sheaf. Titled "Pictures of Hampton in the 1940s, 1950s & 1960s".

It provides a fascinating description of Hampton in the 1940s, 1950s and 1960s including life under

wartime conditions. It covers the roads and buildings of the village, the shops, pubs and businesses of that wartime and post-war era as well as the river and recreation. There is a separate section for each main road with details of the significant changes; each with an individual map and related pictures. Changes to other roads are also described as well as information on all new roads, with appropriate images.

This very well-illustrated book, with many pictures in colour, includes over one hundred and thirty historic images and eleven maps. It can be obtained from the publishers, the Borough of Twickenham Local History Society, at [www.botlhs.co.uk](http://www.botlhs.co.uk) (then go to Publications and click on the image of the book cover). Well worth £8.50. including delivery.

My search for old postcards continues. I am always looking for old postcards and old photograph albums etc. The postcards can be British or Foreign, black and white or coloured and of places or subjects. If you have any that are sitting unwanted in a drawer, in a box in the loft or in the garage or under a bed, please contact me on 07875 578398 or [alanwinter192@hotmail.com](mailto:alanwinter192@hotmail.com) I would like to see them and I pay cash!

Twickenham Green  
TW2 5AH

**Shanawaz  
Express**  
CONTEMPORARY INDIAN TAKEAWAY

**Health Conscious?**  
Why not have your dishes cooked with olive oil for an extra 60p

**020 88934881**  
[www.shanawazexpress.co.uk](http://www.shanawazexpress.co.uk)

**ALLERGY ADVICE**  
Please note that some of our dishes contain dairy, nuts, eggs and other allergens. If you suffer from any food allergies, please make sure to inform us before placing your order.

# Our Conversations with the Council

The round of the latest community conversations has come to an end - but how useful are they?

Since the last local election, the implementation of the 20mph scheme seems to have been the main topic and although many residents were not in favour it is currently being rolled out across the Borough.

It is the job of our locally elected councillors to know residents' concerns, after all there are three allocated to each ward.

So, what do we want and does our council take note?

Recycling is sometimes an issue, especially rubbish sprawling out onto the street, but we can contact the council ourselves if there is a local problem.

We can report a fault on the council website by completing a form

[https://www.richmond.gov.uk/services/roads\\_and\\_transport/roads\\_and\\_road\\_works/road\\_and\\_pathway\\_maintenance/streets\\_fault\\_reporting](https://www.richmond.gov.uk/services/roads_and_transport/roads_and_road_works/road_and_pathway_maintenance/streets_fault_reporting)

or simply send an email to: Customer Services Richmond [customer.services@richmondwandsworth.gov.uk](mailto:customer.services@richmondwandsworth.gov.uk).

Twitter often results in a quick reply [@LBRUT\\_Help](https://twitter.com/LBRUT_Help) (Richmond Council Help).

Of course, it is a shame about the 'Wandsworth' addition but that is the fault of councillors from the previous administration, and as this article is about consultation it should be noted that neither councillors nor senior council officers did anything about consulting us about this amalgamation (although a senior Richmond council officer gave a presentation to residents in Wandsworth before the amalgamation took effect).

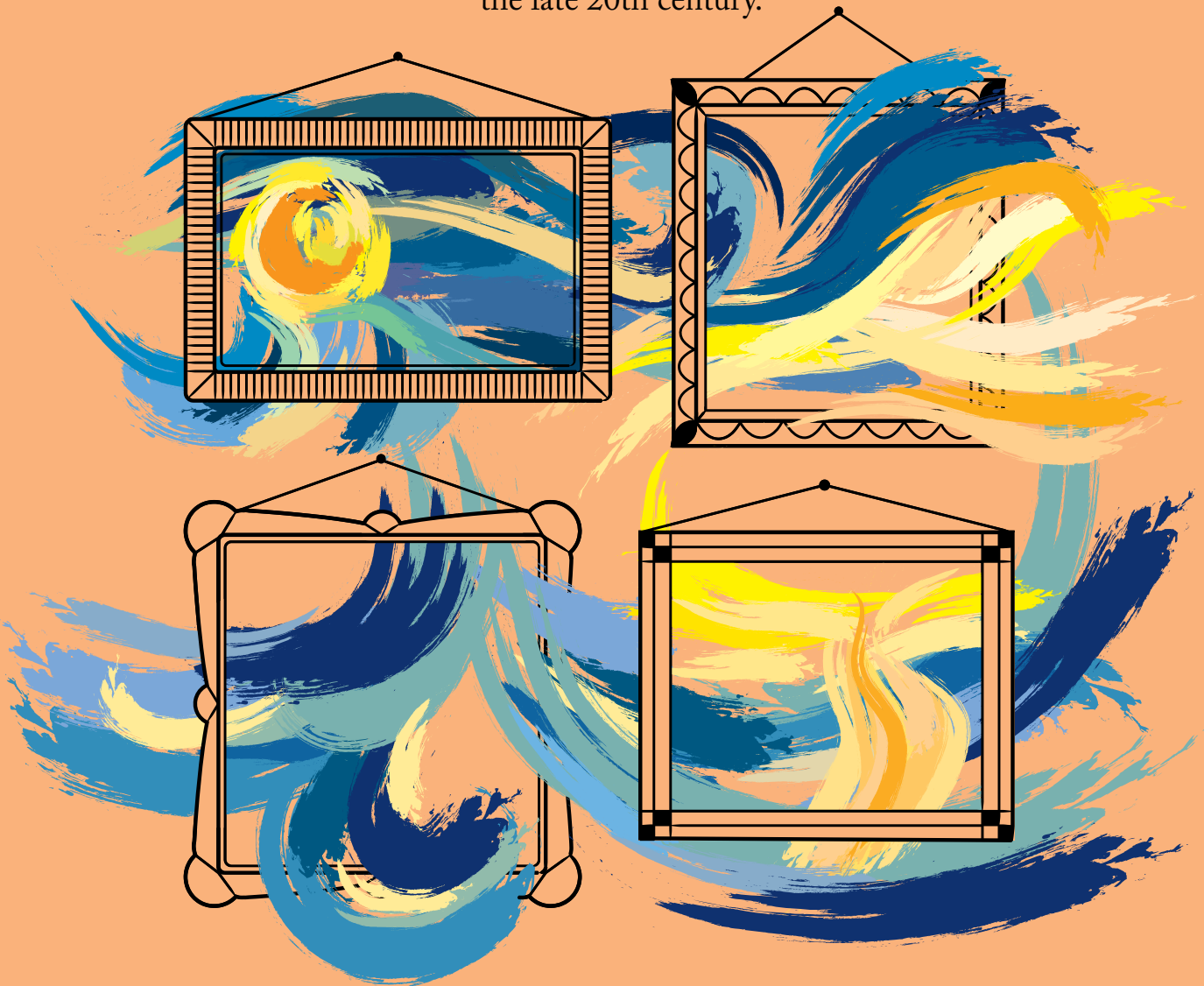
To return to local issues, there are concerns about issues such as looking after verges, blocked drains, and within Twickenham itself the poor state of Twickenham Green (and the absence of public toilets) and further into town the fate of Twickenham Riverside.

Issues of particular concern can always be highlighted in the Tribune as many of our councillors number amongst our readers and will be interested to receive further comments.

# Pictures at an Exhibition

Saturday 19th October 2019, 7.30pm

Step into the gallery as the choir take us on a private view with music that reflects themes present in four well-known paintings. Expect the roughness of the high seas, the wonder and solitude of travel and exploration, and the calming hush of starry nights. Music selections from the Renaissance and Age of Enlightenment through to the late 20th century.



Tickets £15 (under 12s, £8)

from [www.ticketsource.co.uk/cantanti-camerati](http://www.ticketsource.co.uk/cantanti-camerati)  
or Cantanti Camerati 020 8898 8020  
or on the door if available.

**The Exchange Theatre**

London Road

Twickenham TW1 1BE

[www.cantanticamerati.org.uk](http://www.cantanticamerati.org.uk)  
Registered Charity no. 287337-R

# Arts and Entertainment

By Emma Grey



Saturday 26 October to Saturday 2 November at the Mary Wallace Theatre. Hamlet by William Shakespeare.

Saturday 16 November, 11.30 and 2.30. Shakespearience. Join Shakespeare's Men as they fly through Macbeth, Romeo and Juliet, and Twelfth Night.

Sunday 17 November to Saturday 23 November at Hampton Hill Theatre. Pornography by Simon Stephens. 2005, London in crisis. Stories of euphoria, fantasy and despair.

Sunday 17 November, 2.30 at the Landmark Arts. Centre Classics in the Afternoon, Roman Rudnytsky.

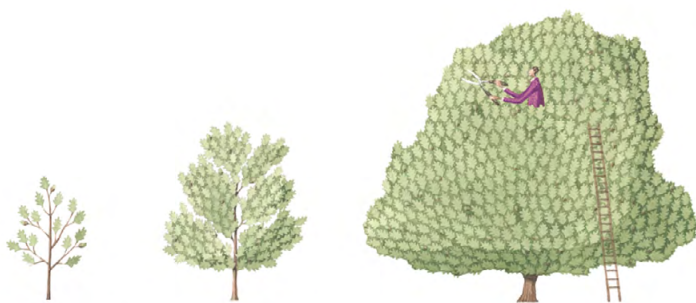
Jazz, rock, and blues music enthusiasts who head to the bars at The Cabbage Patch Pub in London Road are advised to visit Twickfolk, Twickenham Jazz Club and Eel Pie Club websites to check what's on.

Midnight River Blues Band. The Prince Blucher on Twickenham Green, TW2 5AG, Saturday 23rd November, 9:00 PM.

Saturday 19 and Sunday 20 October 10 am – 5 pm Landmark Arts Centre. Autumn Art Fair.

10 Minute Lunchtime Talks at Turner's House, Sandycombe Lodge, Twickenham, Starting at 12.45. Meet the artist: Nicky Carvell – Saturday 19th October, Turner the Fisherman – 7th November, Turner's Women – 5th December. Book in advance.

***If you are interested in advertising an Arts & Entertainment event write to [advertise@twickenhamtribune.com](mailto:advertise@twickenhamtribune.com) for further information.***



**The Tree Agency**

darryl parkin

The Treehouse  
25 King Edwards Grove  
Teddington, Middlesex TW11 9LY  
Telephone 020 8274 0107  
Mobile 07960 123580  
Fax 020 8274 0119  
info@thetreeagency.co.uk  
www.thetreeagency.co.uk

*The Tree Agency*







**Richmond  
Concert  
Society**

**The next concert is on**

**Tuesday 22nd October, 7.45pm**

**A wonderfully varied evening of song**

**Acclaimed soprano Carolyn Sampson and  
pianist Joseph Middleton perform songs by  
Haydn, Debussy, Mahler and others**

**St Margaret's Church, Twickenham, TW1 1RL**

**See our website for further details**

**[www.richmondconcerts.co.uk](http://www.richmondconcerts.co.uk)**

# River Crane Sanctuary



Watching the Simon Reeves “Through the Americas series” last Sunday showed how much wilderness has been lost to cattle ranching and human settlement. The near annihilation of the buffalo from 30 million to 500 was staggering and only matched by the irony of one of the Cowboy/Landowner’s berating their loss of way of life due to current economics of ranching on hundreds of acres of land for 4000 cattle. Sadder still was when we saw how the Native Americans were reduced to living in sub-standard housing on reservations after their land/way of life was taken because they were nomadic and did not have ownership ‘rights’. On the positive side, we saw how another individual is buying up land to re-wild it for the benefit of humanity. Let’s hope he is allowed to continue in the Land of the Free; or is that free for some? Indigenous people in other environmentally sensitive areas are experiencing the same challenges to protect nature with their ancient knowledge of the land and how to maintain sustainability rather than to just make money in the short term. The magnitude of the world challenges for our planet can inure a defeatist or apathetic attitude to local issues which seem small in comparison and the effort needed to get action from the Council does not help encourage us to speak up. However, we do need to keep going as each small success builds confidence and can make a big difference, in some cases, for struggling wildlife in our crowded urban environment. They need to be protected where they have chosen to be and established patterns of breeding, feeding and giving us joy to see them enjoying the sunshine and rain as they preen and play. View the Churchview Road TW2 5BT Application which encroaches onto MOL/Green Space near Trafalgar Infant School and adjacent to the River Crane Corridor. See our photos on River Crane Sanctuary for evidence of red listed species on the site itself and close by or [contact us](#) for more information [Link for Churchview Application](#)

***Use your Voice and do something positive for Our wildlife in Our Community***

The River Crane Sanctuary website <http://e-voice.org.uk/rcs/>



# Councils back in court to challenge Heathrow expansion

Local authorities committed to protecting their residents from the damaging effects of Heathrow expansion will go to the Court of Appeal today (17 October) to outline vital flaws in the Government's decision to give the go ahead to a third runway at the West London airport.

The councils – Richmond upon Thames, Hillingdon, Wandsworth, Hammersmith & Fulham and Windsor and Maidenhead – will say that that the Government failed to properly consider the full impact of expansion on noise, health and the environment and that the Airports National Policy Statement should therefore be quashed.

The boroughs are joined in the appeal by the Mayor of London and Greenpeace.

Lawyers for the group will spell out how the Government's deliberate failure to identify the whole area that could be affected by noise from a hugely expanded Heathrow fatally undermined the decision to go ahead.



Ministers consulted on a single set of speculative flightpaths. The councils say that if it was not possible to identify actual flightpaths – as the Government and the airport claimed – they should have identified all the areas where flightpaths might be located. Papers disclosed in the case show the Government was worried that if it did reveal the true extent of the risk then support for Heathrow expansion would be lost.

The Government also failed to apply its own policy on noise limits. In June 2018 it had decided that the threshold should be 51 units of noise measurement. But in deciding if Heathrow should go ahead it applied a higher threshold of 54.

This change had the effect of dramatically reducing the numbers assessed to be disturbed by noise – thus again concealing the size of the population likely to be affected and minimising the number of people alerted to the threat of intolerable noise.

The councils will say that the Strategic Environmental Assessment (SEA) which is the process by which detailed environmental considerations are built into plans was also defective in failing to consider how the Airports National Policy Statement (ANPS) backing expansion at Heathrow related to all relevant local plans - including the Hillingdon Local Plan and the Mayor's London Carbon Plan.

They will also argue that the Secretary of State was wrong to reject Gatwick as an alternative to Heathrow on the grounds that expansion at this location might threaten a species of orchid.

Cllr Gareth Roberts, Leader of Richmond Council, said:

*"It beggars belief that any UK government should think that an expansion proposal that belongs*

*to the last century should ever be acceptable in an age when collective concern for the impacts of climate change is driving action to bear down on carbon emissions throughout the world. It is no less credible that Heathrow's shareholders should expect taxpayers, passengers and indeed the airlines to continue supporting the spiralling costs of a profligate third runway that, given its inevitable failure to meet environmental standards, can never be built and never be used."*

Cllr Ray Puddifoot, Leader of Hillingdon Council, said:

*"A north-west runway at Heathrow would have a devastating and long-term impact on the health and wellbeing of millions of Londoners. It will bring in an additional 260,000 flights a year - the same as bolting on another airport the size of Gatwick - yet the government continues to pretend that it will have no adverse effects in terms of noise, air quality or climate change. And, in Hillingdon, where we would see some 1,000 homes demolished and 3,750 more blighted, the increased effects of worsening air pollution will be especially harmful for children and young people. In short, a third runway would be nothing short of an environmental catastrophe and a health time bomb and we will continue to do everything in our power to protect residents and stop it from going ahead."*

Cllr Ravi Govindia, Leader of Wandsworth Council, said:

*"The third runway will have devastating consequences for the health of Londoners. It is also becoming clearer by the day that expansion will play havoc with the Government's zero carbon targets. The latest advice to the Government from the Climate Change Committee, which includes reduced assumptions on aviation growth, makes it clear that current planned additional capacity in London, including the third runway, is likely to leave at most very limited room for growth at regional airports. Heathrow's insatiable desire for growth is bad news for airports everywhere else in the country - and bad news for people wanting to fly from their local airport. The Government should be ordered to tear up its ANPS and start again taking account of what we now know about climate change impacts and the effects of tougher zero carbon targets on the rest of the UK."*

Cllr Andrew Johnson, Leader of the Royal Borough of Windsor & Maidenhead, said:

*"Heathrow's relentless demand for growth belongs to another era. Adding more flights, more noise, more road traffic and more air pollution in the most densely populated part of the country is not sustainable. The Government based its support for expansion on a series of false premises. It failed Londoners and people in the Home Counties likely to be affected by expansion by limiting consultation to those areas covered by just one set of flightpaths. We now know that nowhere in the Royal Borough or London will be spared the consequences of expansion at Heathrow. Yet right now millions of our residents don't know this because the detail has been kept from them. The third runway simply cannot go ahead on the basis of such a desperate lack of information."*

Cllr Steve Cowan, Leader of Hammersmith & Fulham Council, said:

*"The Government has chosen to deliberately ignore the huge environmental damage Heathrow's proposed third runway will cause. Meanwhile, its own figures demonstrate Britain will gain a negligible return on the £18 billion of taxpayers' money the government is proposing to throw at this scheme. There's plenty of greener, better initiatives that such huge sums could be spent on which would produce the economic growth our country needs."*

The Court of Appeal will begin hearing the appeals from the councils and other groups on 17 October. The hearings are expected to conclude on 23 October.



# Discover the history of Kew Gardens

Interested in learning about the history of the World Heritage Site Kew Gardens? Join us at Twickenham Library on Friday 18 October.

Speaker Tom Edbrooke will host an illustrated talk covering the history of the Gardens from its original 9 acres to its present size. Expect to learn about the fascinating landscape architects who designed the Gardens and its buildings both past and present.

The event is free, and no booking is required. It starts at 11am and ends at 12.15pm.

Cllr John Coombs, Lead Member for Libraries and Culture, said:

“This is a great opportunity to learn about the rich history of one of the most amazing botanical gardens in the world. There will be tea, cake and plenty of opportunity to chat!”



For more information, please contact [libraryvolunteer@richmond.gov.uk](mailto:libraryvolunteer@richmond.gov.uk).

## Council to improve air quality with TREE-MENDOUS boost!

Richmond Council has pledged to plant thousands of additional trees over the next five years, a move that will boost the borough's air quality and ensure the Borough remains as one of greenest in London.

The programme will see an increase in the numbers of trees we have in the borough and as well as bringing the associated environmental benefits will also make our streets and parks even better places to be.

Cllr Martin Elengorn, Chair of the Environment, Sustainability, Culture and Sport Committee, said:

*“We are fortunate that our borough is one of London's greenest areas. We already have around 18000 street trees and 500 hectares of green space. Tree planting has so many environmental benefits and is an important part of our efforts to tackle the climate emergency both in terms of reducing net carbon emissions and absorbing pollutants. We will particularly look at areas around the borough that have fewer trees or worse air quality. Whilst increasing the number of trees goes some way to tackling climate change, it is also important that we continue to do our bit to reduce the amount of emissions in the first place.”*





**Richmond  
Concert  
Society**

**The next concert is on**

**Tuesday 5th November 7.45pm**

**Explosive virtuosity from the Fournier Trio**

**The internationally award-winning piano  
trio plays works by Beethoven, Brahms and  
Arensky**

**St Margaret's Church TW1 1RL (opposite St  
Margaret's station)**

**See our website for further details**

**[www.richmondconcerts.co.uk](http://www.richmondconcerts.co.uk)**

# Young artist's design picked to mark Twinning celebration

A poster created by an 11-year-old artist from East Twickenham has been picked to mark the reaffirmation of the borough's twinning next year. Richmond upon Thames will be welcoming hundreds of guests from its twin towns of Fontainebleau in France and Konstanz in Germany over the weekend of 26 to 28 June. It is hoped to involve the whole community in the celebrations.

With this in mind, children and young people were invited to design a poster to advertise the event in the three countries. The overall winner is Selim Bener (aged 11) from Orleans Park School in Twickenham. He lives near Richmond Bridge, which provided the inspiration for his poster. Category winners include Clara de Sancha (12 to 16 age group) and Sarah Urbatschek (17 to 18 age group). As part of their prize, the winning artists were invited to attend a tea party today with Cllr Nancy Baldwin, the Mayor of Richmond upon Thames, along with representatives from the Richmond in Europe Association.

Plans are well underway for the reaffirmation, and it is expected that large delegations will travel from Fontainebleau and Konstanz to attend the numerous celebration activities. The Mayor and Leader of the Council will be inviting representatives of all local clubs, associations and schools to an evening at York House on Tuesday 19th November to find out more about the events planned for next year and to invite their participation.



The programme of events will include art exhibitions, plays, sports fixtures, a parade and picnics. The Richmond in Europe Association and Richmond Council are inviting local groups, organisations and businesses to join the programme and organise their own activities during the celebration period.

Anyone interested in signing up to take part can go to the Richmond in Europe Association's website to find out more.

Cllr Nancy Baldwin said:

*"Celebrating our links with other countries seems more important than ever. The reaffirmation aims to cement our commitment to Twinning, but also forge new relationships with communities. I hope that many other groups and organisations join us in welcoming our European guests and organise other local events and activities. We want a programme that will help show case our wonderful borough and is a testament to the values of unity and friendship from our borough to the rest of the world. All the posters that were submitted as part of the competition were a very high standard and congratulations to all the winners. I look forward to seeing them on display."*

Allan Mockford from Richmond in Europe Association said:

*"The international panel of judges was incredibly impressed with the quality and diversity of the entries."*

For more information, visit the [Richmond in Europe Association's website](http://www.RichmondinEurope.org.uk).

# Mad Hatter's tea party for Hospice

There was plenty of time to say "Hello, goodbye" at the Mad Hatter's Tea Party this week - when the Princess Alice Hospice shop in East Molesey was transformed into a Wonderland - an eccentric tearoom complete with teapots, colourful crockery, tempting arrays of cakes - and a host of colourful characters.

The staff dressed up as the main characters from the Lewis Carroll story, welcoming customers into the magical scene.

Three enthusiastic volunteers from nearby HSBC branches collected donations and sold delicious cakes which had been freshly baked and donated for the occasion. Fundraising events at the banks - including a number of quiz evenings - brought in a further £1,500 for the Hospice.

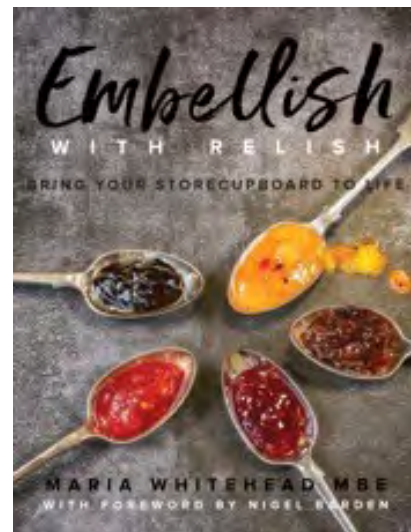




## EMBELLISH WITH RELISH

There's a lovely artisan company called **Hawkshead Relish**, based in the Lake District. This company produces delicious condiments – one of my absolute favourites being their Black Garlic Ketchup. It's a family business that's 20 years old – it started when Maria and Mark Whitehead began making condiments for their small village café...the rest is foodie history. **Embellish with Relish** is a great new cookbook by Maria, featuring a wide range of dishes, all made that little bit tastier by the addition of their relishes.

Here are a couple of recipes from the book that I think are perfect for this time of year. It's obtainable from Amazon and other retailers at £16 for a quality paperback with excellent photography. The Black Garlic Ketchup is available at Lakeland, online from [Hawkshead](#) themselves or Amazon and in various independent food retailers. I see they have new Smoky Black Garlic Ketchup and a pickle that sound divine too.



### **Bulgarian Black Chicken**

Preparation time: 15-20 minutes | Cooking time: 45-50 minutes | Serves: 4

A very old family favourite. In this one pot dish, the potatoes are quite al dente and the vinegar is quite prominent, but everything is balanced by the Black Garlic Ketchup.

1kg potatoes  
8 skin-on chicken thighs  
4 fresh tomatoes, diced  
2 tablespoons olive oil  
Pinch of paprika  
1 chopped onion  
2 finely chopped cloves of garlic  
1 chicken stock cube  
Salt and pepper

#### **For the sauce:**

400g tin of chopped tomatoes  
3 tablespoons red wine vinegar  
2 tablespoons Hawkshead Black Garlic Ketchup  
1 tablespoon tomato purée  
Juice of 1 lemon  
Sprig of fresh rosemary  
3 tablespoons chopped parsley

#### **Method**

Heat the oven to 180°C and peel the potatoes then chop them into 3 to 4cm cubes.

Place the chicken, tomatoes and potatoes in an ovenproof dish. Brush all over with olive oil and dust with paprika.



In a frying pan, gently cook the onion and garlic in olive oil to soften them, then add the sauce ingredients and stir to warm through.

Pour the sauce over the chicken, tomatoes and potato then sprinkle over the chicken stock cube and season with salt and pepper.

Cover and bake in the oven for 20 minutes, then remove the cover and baste the chicken with the sauce, adding a little water if required. Return to the oven for a further 30 minutes until everything is cooked through. Serve with chopped parsley, sour cream and flat bread.

### **Black Garlic Peppered Salmon**

Preparation time: 10 mins | Cooking Time: 15 mins | Serves 4

*Using the crushed black crushed peppercorns with the sweet black garlic ketchup on the fish gives this recipe heat and texture that works well with the salmon. It looks stunning and is so quick and easy to prepare,*

4 x 220g Salmon Fillets  
2 tablespoons mixed whole peppercorns  
2 tablespoons Black Garlic Ketchup  
25ml Olive Oil  
Plain Flour seasoned with salt  
Long grain & wild rice

#### **Method:**

Heat the oven to 180°C / 350 F

Crush the peppercorns roughly using a pestle & mortar or a rolling pin.

Mix the Black Garlic Ketchup with a little Olive Oil

Dust each piece of fish in the seasoned flour.

In a frying pan heat a little olive oil and shallow fry the fish one or two at a time for about 3 minutes each side.

Spoon over the Black Garlic Ketchup mix then sprinkle the crushed peppercorns over the top. Finish in the oven for 5 minutes until the salmon is just cooked through.

Serve with long grain and wild rice with any remaining sauce over the fish



### **IT'S CHOCOLATE WEEK AND I LOVE THIS!**

This week is Chocolate Week and as regular readers will know, I like to think I'm quite a connoisseur...

One of my favourite brands is **Chocolate and Love** – the packaging is stunning and the contents reliably good. The chocolate is Fair Trade and Organic and there is a range of different flavours. Available from Ocado (£3.50 for 80g) and Harrods plus other discerning retailers, it's also available directly from [chocolateandlove.com](http://chocolateandlove.com)

The latest variety is really good – **Milk Chocolate (50% Cacao) with Caramelised Hazelnuts and a dash of Sea Salt**. It has texture, and is a seriously luxurious treat. The company's mantra of more cacao and less sugar allows you to taste the true cocoa flavour. It's great to share with those you love!



Instagram: @[theseasonedgastronome](https://www.instagram.com/theseasonedgastronome)

# THE KINDRED SPIRIT BAND



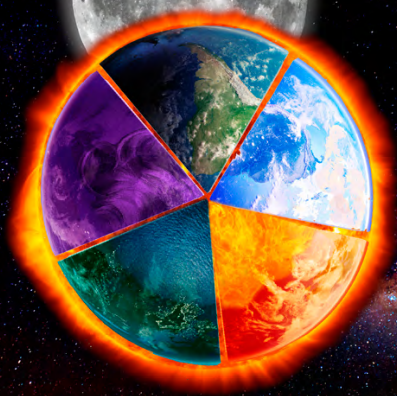
“FOLK ROCK MEETS CLASSICAL  
WITH A SCIENTIFIC EDGE”

RACHEL MANN PROG



photo Prog Stan S

## ELEMENTAL



ELAINE SAMUELS & KINDRED SPIRIT BAND

### HAVE A STUNNING NEW ALBUM

FEATURING ANGELS, DAEMONS, MYSTERIES  
MIRACLES, DISCOVERY AND INSPIRATION

TITLE TRACK  
THE ALCHEMYST  
FEATURES ON  
PROG MAG NO 102

SALES OF THE ALBUM  
AT THE LAUNCH CONCERT  
ARE RAISING MONEY FOR  
CHARITY HOME START

**HOME  
START**

Richmond, Kingston  
& Hounslow  
Helping struggling  
families with young  
children

SUPPORT SWEDISH SINGER SONG WRITER SAGA



LAUNCHING

## SATURDAY 2ND NOVEMBER

WITH A SPECIAL CONCERT AT: ALL HALLOWS CHURCH HALL,  
ERNCROFT WAY, TWICKENHAM, TW1 1DA

DOORS 7PM.

FIND OUT MORE

TICKETS £8

[WWW.KINDREDSPIRITBAND.CO.UK](http://WWW.KINDREDSPIRITBAND.CO.UK)



## Elemental

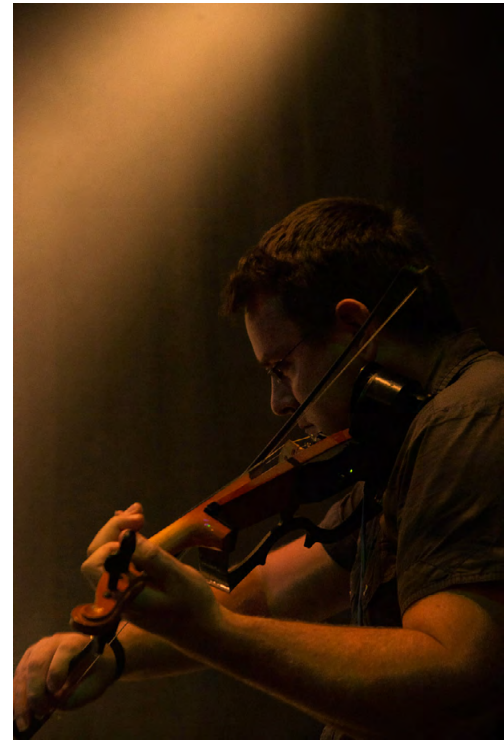
Music and lyrics by Elaine Samuels

Kindred Spirit, recording to be released on 2<sup>nd</sup> November

Review by Larry Richmond

Well, hello readers. I'd best put my glass of champagne down to tell you about a most interesting new record album that I have just heard. The album *Elemental* from the Kindred Spirit Band, will be launched on CD at All Hallows in Twickenham, on Saturday 2<sup>nd</sup> November. *Elemental* has various musical elements to it, a combination of folk, with touches of Irish folk, jigs, reels and a touch of sea shanty, plus blues and light rock.

I found it a most enjoyable listen. The album is well produced. The musicians are excellent. The lead vocalist has a very pleasant voice.



Mention

must be made of the individual performers. The vocalist and guitarist Elaine Samuels, who wrote all the original new songs, has a most charming voice, hauntingly relaxing in her delivery. She has an immense talent and a pure joy to hear.

Martin Ash on violin and viola, plus Catherine Cooper on flute and saxophone both have a classical feel that is delightful. Les Binks

on drums and percussion is equally perfect.

Mike Hislop and Aleem Saleh share the bass guitar credits and provide good bass support throughout, while Steve Hutchinson provides backing vocals.

There are twelve tracks on the album, Elaine Samuels' eleven original tracks and a bonus cover number, *Feelin Good* made famous by Nina Simone and Muse. The tracks convey an inner feeling of life, and are mesmerizing in their lyrical content and musical arrangements.

Now let me pour another glass of vintage champagne and play again this excellent album, *Elemental*.

Read Larry Richmond's review at

[www.markaspen.com/2019/10/15/elemental](http://www.markaspen.com/2019/10/15/elemental)

Photography by Clive Turner and RP Photography





## Prism

by Terry Johnson

Hampstead Theatre and Birmingham Rep at Richmond Theatre until 19<sup>th</sup> October, then on tour until 30<sup>th</sup> November

Jack Cardiff was a ground-breaking cinematographer and film director. He was responsible for the “look” of the stunning Powell and Pressburger movie classics including *Black Narcissus*, *The Red Shoes* and the incomparable *African Queen*. The prism of the title is the very prism used to create the original colour



palettes of these films. Tim Shortall's set is a delight to behold and, together with Ben Ormerod's lighting and Ian William Galloway's video design, conspires to evoke the cinematic heyday of the 20<sup>th</sup> century.



The premise of *Prism* is that Cardiff's son, Mason (a bit of a thankless role but someone must be the Ernie Wise to Cardiff's Eric Morecambe), played by Oliver Hembrough is trying to get Cardiff to write his memoirs whilst he is still able. Cardiff (an absolute *tour de force* performance by a charismatic and highly energetic Robert Lindsay) is suffering from the early stages of dementia and is an irascible old chap anyway. He would rather relive his memories than write them down. Thus his wife Nicola (Tara Fitzgerald), Lucy his carer (Victoria Blunt) and Mason are all perceived as the movie stars he worked with back in the day. It is a lovely device and becomes particularly poignant in Act Two.

Act One does an excellent job of setting up the plot and introducing the characters, but the second act takes us on sensory journey that was totally unexpected. And I am not about to throw any spoilers into the mix but Victoria Blunt and Tara Fitzgerald both excel. Fitzgerald, in particular raised an audible “wow” from the audience when she appeared ...

Read Eleanor Marsh's review at [www.markaspen.com/2019/10/15/prism](http://www.markaspen.com/2019/10/15/prism)

Photography by Manuel Harlan



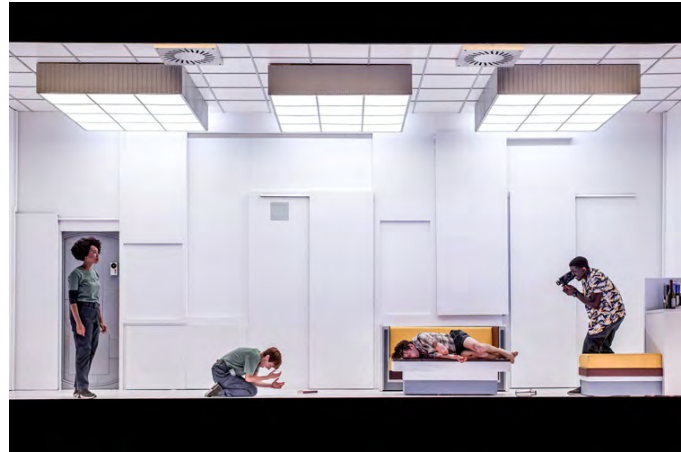
## Solaris

by David Greig, based on the novel by Stanisław Lem

Lyric Hammersmith Theatre, Malthouse Theatre Melbourne and the Royal Lyceum Theatre, Edinburgh, at the Lyric Hammersmith until 2<sup>nd</sup> November

Psychologist Kris Kelvin arrives on stage like the breath of reason in a madhouse. Boarding the space station in her pressure suit, she seems as alien as the planet Solaris below. Dr Snow treats her like one of the apparitions that have been plaguing the crew. Sure enough, Kelvin has soon thrown reason out of the window, or rather the airlock, and taken up with the spectre of her dead lover, Ray.

*Solaris* succeeds on stage because it is a ghost story, a tragic romance, a thriller, a chamber piece and



even at times a comedy of manners. It doesn't try to blind us with science fiction, and indeed takes a simple delight in such retro-futuristic flourishes as the VHS tapes used by the scientists to log their observations.

palette ranging from clinical to 1970s movies, the characters' moods play out on a cinematic canvas.

Even the impressive set, which smoothly transforms from cabin into lab, lounge and concourse, is satisfying low-tech, all discreetly uneven white surfaces from which beds, benches and lockers are revealed. With the scenery transitions and a lighting

This makes, at times, for quite a raw experience. The oceanic planet, so far as the crew understand it, is trying to communicate with them through the medium of the 'visitors', manifestations of lost loved ones from their own subconscious. We only twig properly that this is going on with the sudden appearance of Ray in Kris's bed, and her panic on waking to discover him there can be felt quite keenly. It becomes still more harrowing when she coaxes him out of the airlock to his death ...



Read Matthew Grierson's review at [www.markaspen.com/2019/10/15/solaris](http://www.markaspen.com/2019/10/15/solaris)

Photography by Mihaela Bodlovic



## The Sound of Music

by Richard Rodgers, lyrics by Oscar Hammerstein II

Hinchley Manor Operatic Society at Epsom Playhouse until 12<sup>th</sup> October

Love or money, freedom or fame, pragmatism or honour: these are the dilemmas facing Georg von Trapp, an aristocratic Austrian, and his family during the *Anschluss*, the annexation of Austria to the Germany of the Third Reich in 1938. Heavy considerations for heavy times, but Rodgers and Hammerstein's much-loved musical, *The Sound of Music* treats these subjects with a simplicity that has

delicacy and charm.

HMOS's engaging production picks up the light approach and runs with it.



*The Sound of Music* is based very loosely on the memoirs of the real von Trapp family whose adventures were sequentially re-written in several books and then made in 1958 into a German film, *Die Trapp-Familie*. This was Rodgers and Hammerstein's "Chinese whispers" source material. Having personally having driven on mountain roads between Salzburg and Switzerland, on both sides of the Germany-Austria

border, I know that it is over 250 miles of very demanding driving. I would not want to walk it over the Alps, even in peacetime let alone to escape the Nazis, and with seven young children. (The real von Trapp took ten children on a train to Italy.) Oh, and the direct route goes straight through Hitler's "Eagle's Nest". But let us not let facts get in the way of a good story.

HMOS certainly tells a good story well. Director, John Harris-Rees heads a co-ordinated company who clearly enjoy working together. HMOS's seven-piece band of three under musical director Brian D Steel, created the lively, adept and nimble sound that propelled the action on stage, but can there have been a musical with so many of its songs becoming standards as *The Sound of Music*? ...

Read Mark Aspen's review at

[www.markaspen.com/2019/10/11/sound-music](http://www.markaspen.com/2019/10/11/sound-music)

Photography by Shannon Hearn.



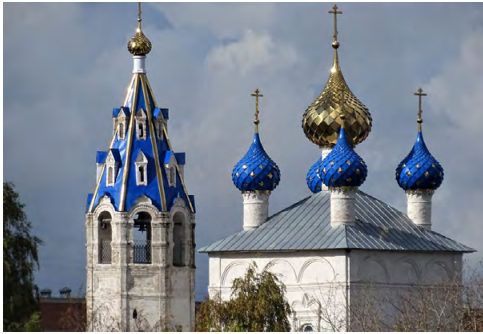
# TRAVELLER'S TALES 52

## RUSSIAN CRUISE



Doug Goodman continues with the cruise from Moscow to St. Petersburg

Last week we cruised along the Volga from Moscow and stopped at Uglich and Yaroslavl. Today we visit Kuzino to see a school and Russia's biggest fortified monastery then continue on to Mandrogy to meet local people at work in a craft village. We sailed past green, blue, black and golden domed Orthodox churches, tiny settlements with wooden farm houses, vast forests, bulky ships and watched sea eagles. The ship passed the Mother of Russia statue as we entered the Reebinsky reservoir after a two and a half hour crossing of the White Lake. The reservoir was finished in 1947 and in its construction 700 towns and villages were flooded across two river valleys.



Volga Scene



Viking Rurik Bridge Visit



Three Cruise Experts

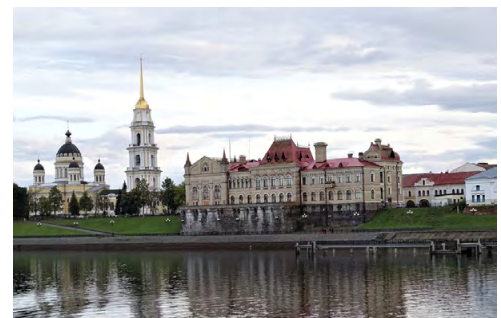
In Kuzino we toured the monastery of St. Kiril which was founded in 1397. It's the largest fortified monastery in Russia with walls one and a half miles long, 11 beautifully preserved churches from the 15th to 17th century and a museum of icons. A school visit gave us the chance to learn about Russian education and to enjoy a craft exhibition and a performance of dances by the pupils. I noticed displays on WW2 and the history of Communism. There was a flower-filled corner devoted to the memory of pupils who had died in the Afghan war. Back on board tea from a samovar and cakes were served by the ship's team.



Strong Stuff



Tea Russian Style

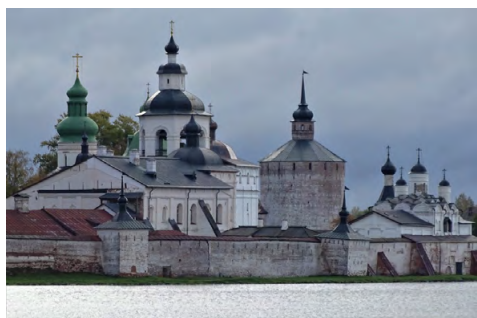


Volga View

At our final stop before St. Petersburg we spent a day at Mandrogy - a reconstructed open-air museum where traditional crafts have been revived and on show in the wooden houses. A windmill, log cabins for holidays by the waterside, a vodka museum, doll painting centre, a zoo



and a Russian banya were dotted around the village. The traditional banya – a sauna, steam bath and massage is believed to offer the perfect way to purification! I was tempted but the 10 minute birch broom massage followed by a dip in icy water rather put me off. Crafts included felting, doll making, wood carving, pottery and ceramics exhibited the skills of old Russia. A lot of shopping and a walk in the sunlit birch woods ended a very enjoyable day.



Kiril Monastery



Mandrog Church in the Birch Forest



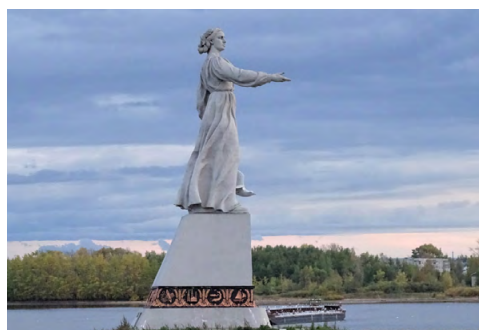
Painting Matrioshka Dolls

### CROSSING LAKE LAGODA

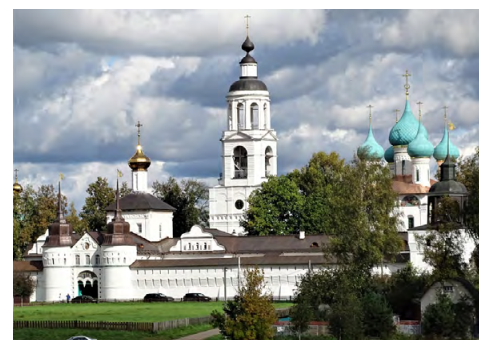
An inspection of the bridge and discussion on the hi-tech navigation equipment on Viking Rurik was most interesting. I met Jonathan Rachman, in charge of the restaurants, and discovered that the 200 passengers and 96 crew consume during 12 days 700 bottles of wine, 4,000 eggs and 1200 kilos of potatoes served at 900 daily meals. Executive Chef Cory Balaban and his team provided excellent food and first class service. In the Panorama Bar Helen and Paolo offered a range of Vodkas, Georgian wines and a delicious Baltika beer. Four lectures on Russian history from Czarist times through Soviet era to modern times were fascinating and were very open and honest about oppression through the ages.



Farm House in Mandrog



Mother Russia



Orthodox Church

Traversing Lake Lagoda was reminiscent of crossing the Channel in rough weather. At 7,000 sq. miles it's Europe's largest lake and surrounded by the dense forests of Karelia. During the winters of WW2, when Leningrad was under siege for 900 days, the only way in or out for supplies and people of the surrounded city was across the frozen lake.

On the final day of the cruise we passed the holiday dachas of St Petersburg's residents and more brightly painted churches before joining the River Neva. Three exciting days in the city awaited us with visits to the ballet, palaces and the magnificent collections in The Hermitage.

Next week, in the final episode, Doug describes some of the sights in the beautiful city of St. Petersburg.

**World InfoZone Russia:** [www.worldinfozone.com/country.php?country=Russia](http://www.worldinfozone.com/country.php?country=Russia)



# FOOTBALL FOCUS

by Alan Winter



## BRENTFORD FC

### SERIOUS KNEE INJURY FOR SERGI CANOS

Brentford FC have confirmed that supporters' favourite Sergi Canós has suffered a serious knee-injury. The 22-year-old picked up the injury in the later stages of the game against Nottingham Forest on 5th October and has now begun a significant period of recovery and rehabilitation before he can play again.



Sergi, who committed his future to the Club when signing a four-year contract earlier this month, has been with Brentford since January 2017. This is his second spell with The Bees after spending the 2015/16 season on loan at Griffin Park. In more than four years in West London, on and off, he has played 149 games for Brentford and scored 23 goals. We wish you a speedy recovery Sergi.

### BEES HOME TO MILLWALL TODAY!

Championship football resumes this afternoon (Saturday 19th Oct) with Brentford at home to London rivals Millwall. Griffin Park. 3.00 kick-off.

***Come on you Bees!***

## HAMPTON & RICHMOND BOROUGH

### BEAVERS MOVING UP THE TABLE!

#### WELLING UNITED 0 – HAMPTON & RICHMOND 1

A good away win last Saturday moves the Beavers up the league table and into 18th position with Gary McCann's side recording two wins and two clean sheets on the trot.

Captain Luke Ruddick's second-half header sealed three vital away points for the Beavers at Park View Road. Ruddick headed home Sam Deadfield's whipped corner. A set piece routine that looked straight from the training ground.

Desperate to get the equaliser, the Wings players pushed on threatening on a number of occasions. Some great defending by Ruddick in the 87th prevented a shot from testing Hampton keeper Dan Lincoln late on. But just afterwards, Cook, who had looked lively all game, came inches from bringing the scores level but it was well saved again by the Hampton keeper.

The Wings had one last opportunity for an equaliser with seconds remaining. A needless foul from Dean Inman led to a floated freekick into the box which very nearly found its way into the back of the Beavers net.

No game for Hampton this weekend but another National League South fixture away at Hungerford Town next Saturday 26th of October.



# Football Reporter Wanted!

Hello, I'm Alan Winter and I have been writing the weekly Twickenham and Richmond Tribune Football Focus column featuring Brentford and Hampton & Richmond Borough football clubs for a year or more. It has been great fun but I now need to take some time out. This is your big chance!

Firstly let me explain how this will affect your life. You will need an hour or two each week to stay on top of match reports, forthcoming fixtures and player and club news. You don't necessarily have to be at games as you can pick up all the content you need from the respective club web-sites. Having said that, it would be nice if you support either club or have an interest in them. Your weekly copy should be emailed to the Tribune by Thursday night which gives you time to cover Wednesday evening games where they occur.

You will receive no wages, expenses or other perks from the Tribune although you will probably be able to get into Hampton games for free and have a nice seat as a member of the local press.

You will also start to develop a modicum of local fame or notoriety from the Tribune's ever growing readership.

I have met many people who have genuinely appreciated catching up with the local football news each week and I have also been accosted with "You're that bloke who writes that rubbish about Brentford aren't you!"

Anyway, if you are interested, send me an email at [alanwinter192@hotmail.com](mailto:alanwinter192@hotmail.com) or give me a ring on 07875 578398 and we can talk it through and answer any questions you may have.

Come on you Bees!

## Light Up At Night!!



**Stay Safe**  
When cycling at night  
always use a light

A Twickenham Tribune Campaign  
[www.TwickenhamTribune.com](http://www.TwickenhamTribune.com)

# Brentford FC sign Levy UK as official catering partner for new stadium

Levy UK on board for Brentford Community Stadium, due to open next summer  
Brentford FC has appointed sports stadia catering market leaders Levy UK as their official food and hospitality partner for their new stadium.

Having won a five-year contract to deliver a bold retail, hospitality and non-matchday catering vision, Levy UK has been brought onboard to help mobilise the foodservice operation across the brand new 17,250-seat Brentford Community Stadium.



Brentford FC will be moving from their historic Griffin Park home at the start of the 2020/21 season. The stadium is part of a major regeneration project of the area known as Brentford East and once constructed the new stadium will be ready for both Premier League football and Premiership rugby with London Irish RFC also playing their home games in that part of West London. The development also includes the construction of more than 900 new homes, a new purpose-built location for Brentford FC Community Sports Trust, and a public square with shops and cafés.

A focus on the local community will be top of Levy UK's agenda with the new stadium set to generate hundreds of jobs. Firm fan favourites will be part of the food and beverage offering as Levy UK engage with local suppliers and artisan producers to bring a taste of the local area to life.

Every aspect of the customer journey has been considered and a range of new and future-proofed smart technologies will be installed to enhance the fan experience, through helping aide speed of service and introducing a cashless environment. The roll out of digital screens driven by an innovative content management system will also help create a seamless retail experience.



Levy UK's hospitality and culinary experts have created a range of exclusive packages for the Club's premium seats and will also be bringing their innovative food offering to the stadiums retail outlets where they will deliver a wide variety of menus , including plant-based dishes.

Jon Varney, Brentford FC Chief Executive, said:

“We're delighted to have Levy UK on board as our official food and hospitality partner. Levy are passionate about providing Brentford FC and London Irish RFC fans and business partners with great food, quality drinks and first-class service at our new home. Levy is a company with great experience in our industry and has a proven track record in delivering high quality catering in football and rugby stadiums. We want every aspect of our new home to be first class; with Levy on board I'm confident our matchday offering, whether in our premium lounges or on the concourses, will be second to none.”

Jon Davies, Managing Director at Levy UK, added: “We're really excited to be mobilising a cutting-edge foodservice operation at Brentford FC's new home in partnership with the club. To deliver a truly legendary experience all touch points have been considered and we'll be rolling out a fan-first approach that will offer a huge variety of choice to every guest.”



# Rugby World Cup 2019 - Jones names England team to play Australia

England men's head coach Eddie Jones has named his side to play Australia in the quarter-final of Rugby World Cup 2019 on Saturday 19th October at Oita Stadium (KO 4:15pm local time, 8:15am UK time live on ITV).

Captain Owen Farrell is named at fly half with Manu Tuilagi and Henry Slade selected as the centre pairing.

Jonny May will make his 50th appearance for England on Saturday and is named on the left wing with Anthony Watson on the right. Elliot Daly is selected at fullback.

Billy Vunipola starts at number 8 having recovered from injury with Tom Curry and Sam Underhill named as flankers.

Mako Vunipola makes his first start in Japan having played in his first game of the tournament against Argentina from the bench.

Jones said: *"Once you get to the quarter-finals it's about having the right mindset. We know how well we can play, it's about us playing to our strengths and trying to take away from what Australia want. Australia are a clever team, they will have some specific attacking strategies to play against us so we need to have a great situational awareness. We need to defend with brutality and when we have the ball we need play on top of them."*

On May reaching 50 caps for England, Jones added: "It is a great achievement and an honour for him and his family. Everyone in the team is really pleased for him. I think this World Cup has really shown how hard he has worked at his game. He has come back from a significant knee injury to be close to the fastest winger, if not the fastest winger in the world, and has the ability to score tries from any situation."

## England starting XV

- |   |  |
|---|--|
| 15 Elliot Daly (Saracens, 36 caps)          | 1 Mako Vunipola (Saracens, 55 caps)            |
| 14 Anthony Watson (Bath Rugby, 39 caps)     | 2 Jamie George (Saracens, 42 caps)             |
| 13 Henry Slade (Exeter Chiefs, 23 caps)     | 3 Kyle Sinckler (Harlequins, 28 caps)          |
| 12 Manu Tuilagi (Leicester Tigers, 37 caps) | 4 Maro Itoje (Saracens, 31 caps)               |
| 11 Jonny May (Leicester Tigers, 49 caps)    | 5 Courtney Lawes (Northampton Saints, 78 caps) |
| 10 Owen Farrell (Saracens, 76 caps) C       | 6 Tom Curry (Sale Sharks, 16 caps)             |
| 9 Ben Youngs (Leicester Tigers, 92 caps)    | 7 Sam Underhill (Bath Rugby, 12 caps)          |
|   | 8 Billy Vunipola (Saracens, 48 caps)           |

## Finishers

- |   |  |
|---|--|
| 16 Luke Cowan-Dickie (Exeter Chiefs, 18 caps) | 20 Lewis Ludlam (Northampton Saints, 5 caps) |
| 17 Joe Marler (Harlequins, 65 caps)           | 21 Willi Heinz (Gloucester Rugby, 7 caps)    |
| 18 Dan Cole (Leicester Tigers, 92 caps)       | 22 George Ford (Leicester Tigers, 62 caps)   |
| 19 George Kruis (Saracens, 38 caps)           | 23 Jonathan Joseph (Bath Rugby, 44 caps)     |



# The UK border: preparedness for EU exit October 2019

There are risks to the UK border if the UK leaves the EU without a deal on 31 October 2019. Government departments have done a great deal to prepare, but the National Audit Office (NAO) has found that the most significant risks to the smooth operation of the border remain and resolving them is now, to some extent, out of government's control.

In its report, published today, the NAO has provided an independent assessment on how government departments have been preparing the border for a no-deal exit since the Article 50 deadline was extended from 12 April 2019.

It is impossible to know exactly what will happen at the border in the event of no deal. Government accepts the border will be "less than optimal", which could mean disruption of goods crossing the border and queues for businesses and the public.

<b>145k to 250k</b>	<b>205m</b>	<b>£40bn</b>
traders, estimated by HM Revenue & Customs (HMRC), who would need to make customs declarations for the first time in the event of 'no deal'	passengers who crossed the border between the UK and the rest of the EU in 2017, not including an unknown number of passengers who crossed the border between Northern Ireland and Ireland	estimated tax and duty collected in 2017-18 on border transactions
<b>260 million</b>		
	HMRC's revised estimate of the number of customs declarations it may need to process if the UK leaves the EU with 'no deal', compared with current volumes of 55 million	
<b>8%</b>		
	Planned increase in Border Force operational staff from the 7,734 it employed in 2017-18. This follows a 7% reduction in staff numbers from 2014-15 to 2017-18.	
<b>11</b>		
	Out of 12 critical IT systems at the border that the Border Delivery Group has assessed as being at risk of not delivering on time and to acceptable quality (rated amber or above) by 29 March 2019	

Government has prioritised security and safety; the flow of people and goods; and then compliance activity, including the collection of revenue. This comes with financial risks, as in the short-term it will not require EU traders to provide all the information at the border that it requires of non-EU traders. As the NAO has previously reported, it is also likely that organised criminals will quickly exploit any perceived weaknesses or gaps in the enforcement regime.<sup>1</sup> The government intends to apply temporary measures to give businesses more time to prepare and facilitate

the flow of traffic. These include Transitional Simplified Procedures which allow registered businesses to delay submitting customs declarations and payment of customs duties on imports from the EU to the UK. As of early October 2019, approximately 25,000 of the 150,000 to 250,000 traders that may need to make a customs declaration on day one in the event of no deal had registered.

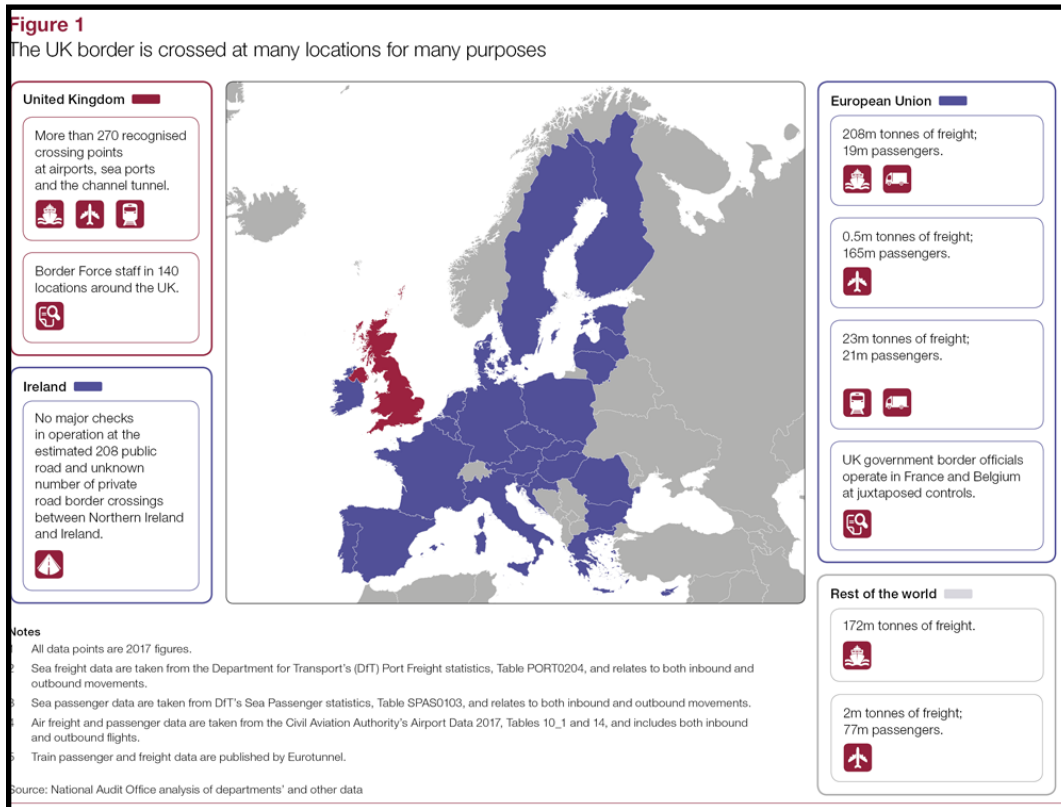
In preparing for a no-deal exit, government has put in place new systems, upgraded existing systems and made other extensive changes to minimise potential disruption. Since April, departments have strengthened aspects of their preparations including testing whether key systems will operate and integrate as planned on day one. They have secured and developed three more sites to deal with the expected increase in goods entering the UK under transit arrangements.<sup>2</sup> They are also recruiting more staff, including around 500 more Border Force staff in 2019-20 to carry out transit checks.

However, despite government's efforts, there is still work to do and little time to resolve any issues which may emerge. Government has also not been able to address the most significant

risks relating to the border, although it has tried to minimise the impact of these. Government's reasonable worst-case planning assumptions state that the flow of goods across the border could initially be reduced to 45-65%, taking up to 12 months to flow normally. In forming this estimate it assumed that 30-60% of hauliers travelling to the EU border won't have appropriate documentation. Therefore, government plans to introduce mandatory readiness checks on lorries to identify and divert hauliers who are not ready for French customs to reduce queues building up on the approaches to Dover and Eurotunnel. There is limited time to get the necessary infrastructure and staff in place to undertake these checks,

finalise how they will operate in practice, and inform hauliers ahead of 31 October.

The UK government has announced temporary arrangements for managing trade crossing the land border from Ireland to Northern Ireland, in the event of no deal, but it acknowledges these are not likely to be sustainable. There is still uncertainty about border arrangements that the Irish government would introduce, including what checks it would impose or where they would take place.



The government is once again preparing to activate its civil contingency plans to manage short-term, severe impacts of no deal, known as Operation Yellowhammer. Work is also underway to enable the continued supply of essential goods and medicines, and to manage queues of traffic in Kent (Operation Brock).

Many border arrangements for a no deal are temporary and not sustainable in the longer-term. In the longer-term, government will need to balance enabling the flow of traffic across the border with introducing appropriate measures to minimise risk of non-compliance or criminal activity.

**Gareth Davies, the head of the NAO, said today: "Preparing the UK border for EU exit with or without a deal is extremely complex and has required a huge amount of work from many government departments, agencies and third parties such as traders. Despite their efforts, significant risks remain which may have consequences for the public and businesses.**

**"Government will face new challenges in monitoring and responding to any disruption that may ensue following a no deal exit, and will need to replace temporary measures with sustainable long-term solutions to ensure the border is fit for purpose."**



National Audit Office

# Richmond Film Society's 57th Season of World Cinema continues at The Exchange, Twickenham

22nd October, 8pm

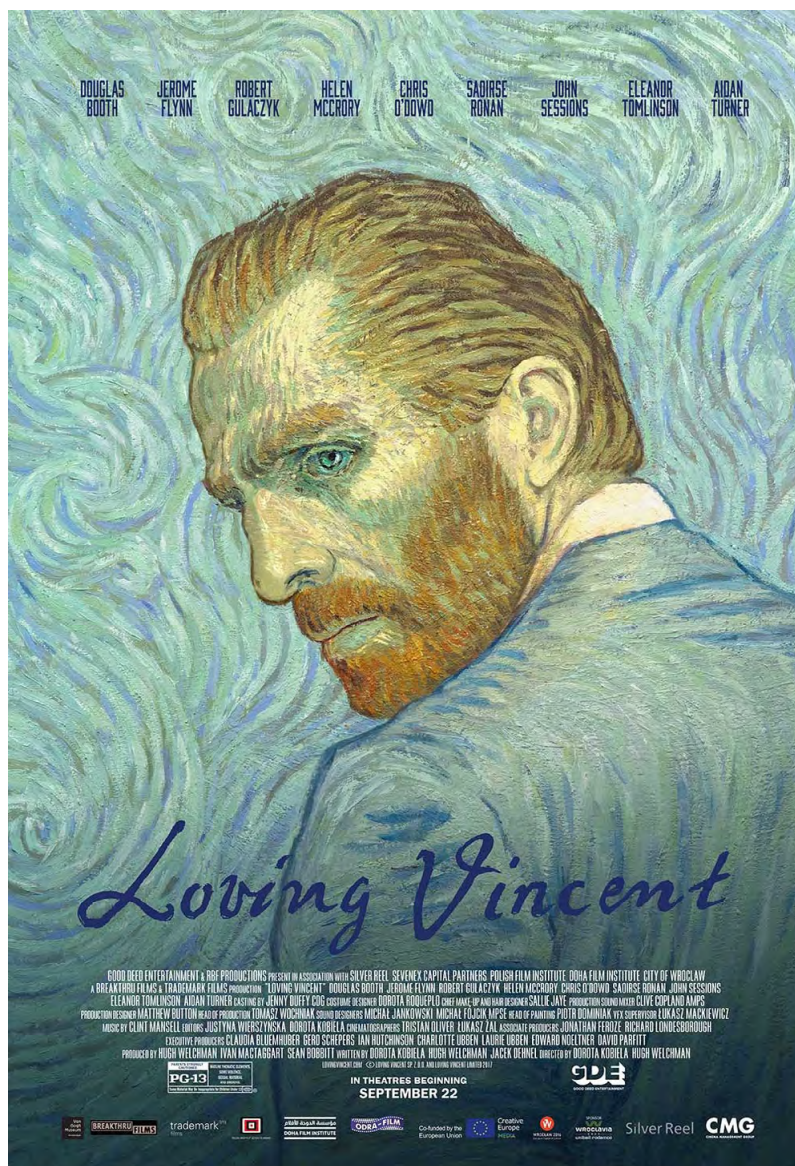
## 'Loving Vincent' (Poland/UK)

RFS's season continues with the world's first fully painted animated feature film is a biographical drama about the final days of Vincent van Gogh. Oscar-nominated and a Golden Globe and BAFTA winner for Best Animated Feature.

[www.richmondfilmsoc.org.uk](http://www.richmondfilmsoc.org.uk)

Non-member tickets are £5 (full-time students £3) and can be purchased in advance from The Exchange's Box Office (subject to a cap of 60) - in person, by telephone on 020 8240 2399 or online at [www.exchangetwickenham.co.uk/events/](http://www.exchangetwickenham.co.uk/events/). A further 50 or so tickets will be available to purchase on the door on the night of screenings (cash only) on a 'first-come-first-served' basis.

Films are shown at 8.00pm sharp on alternate Tuesdays (no trailers and no ads) and are screened at The Exchange, 75 London Road, Twickenham, TW1 1BE. On screening nights, the Bar is open from 7.00pm and remains open after the film. Drinks can be taken into the auditorium and coffee, tea and snacks are also available. Film notes are provided for each screening and audience feedback is obtained via response slips.





Half Page

Quarter Page  
Landscape

Quarter Page Portrait

Eighth Page

Eighth Page  
Landscape

Example advert sizes shown above

Thousands read The Twickenham & Richmond Tribune

If you are reading this you could be advertising your business with  
The Twickenham & Richmond Tribune. Community rates are  
available

Contact: [advertise@TwickenhamTribune.com](mailto:advertise@TwickenhamTribune.com)

View ad details at [www.TwickenhamTribune.com/advertise](http://www.TwickenhamTribune.com/advertise)

**Contact**

[contact@TwickenhamTribune.com](mailto:contact@TwickenhamTribune.com)

[letters@TwickenhamTribune.com](mailto:letters@TwickenhamTribune.com)

[advertise@TwickenhamTribune.com](mailto:advertise@TwickenhamTribune.com)



**Published by:**

Twickenham Alive Limited (in association with World InfoZone Limited)

Registered in England & Wales

Reg No 10549345

The Twickenham Tribune is registered with the ICO under the Data Protection Act, Reg No ZA224725

©Twickenham Alive Limited. All rights reserved. No part of this publication may be used or reproduced without the permission of Twickenham Alive Limited. While we take reasonable efforts, this online newspaper cannot be held responsible for the accuracy or reliability of information. The views and opinions in these pages do not necessarily represent those of Twickenham Alive Limited or The Twickenham & Richmond Tribune. [Terms & Conditions](#)